



NORTHCOAST SPORTS SERVICE VOLUME 27
 PO Box 450829
 Cleveland, OH 44145
 1-800-654-3448 or ncsports.com

NO. 4 FOOTBALL
2017-2018

COVERING GAMES FROM
NOVEMBER 30th, 2017 - FEBRUARY 4th, 2018

POWER SWEEP / POWER PLAYS

ncsports.com

Power Sweep and Power Plays are available every Tuesday after noon est at our website. If you do not have a paid season subscription to either Power Sweep or Power Plays, Visit ncsports.com and purchase your single copy issues there.

**The most
informative
line of its
kind!**

DAILY UPDATES AT:

1-347-677-1700

DON'T MISS OUT ON ANY OF THE FREE PLAYS EACH DAY!!

**FREE
College Plays
This Week!**

EXT#3 - The NCSports Comp Plays (4 per week)

Tuesday & Wednesday - The UNDERDOG Play of the Week

AN AMAZING 27 OUTRIGHT UPSETS! The play that just missed out on being the Power Sweep Underdog Play!

Thursday & Friday - Our Top NFL TOTALS Play as of Thursday

You will not want to miss this high % winning Complimentary Play each week!

Saturday - The selection that JUST MISSED being a Late Phone Release

This was almost a ★ rated selection so no surprise it's a solid winner!!

Sunday - The selection that JUST MISSED being a Late Phone Release

Less value than on a Saturday with 50+ games but still a great FREE Play!

EXT#5 - LINES Updated daily!

EXT#9 - SIX FREE PLAYS PER WEEK!!!!

- Monday** - **Early Bird Play: 185-106 (64%) the L/20 years!**
- Tuesday** - **4★ From the Power Plays Newsletter: 64-40 (62%) L/8Y!**
- Wednesday** - **Midweek/Econ Club #2 Play: 99-79 (56%) L/13Y!**
- Thursday** - **Big Dog Play: 66-42 (60%) L/6Y! 29 UPSETS**
- Friday** - **Big 12 Play: 89-70 L/13 years!**
- Saturday** - **Northcoast College TV Totals Play: 30-20 60% L3Y!**

NFL Football Week 13

Thursday, November 30

301 WASHINGTON

8:25 p.m.

NBC

302 DALLAS**COLLEGE Football Week 14** Friday, December 1**PAC 12 CHAMPIONSHIP** Levi's Stadium, Santa Clara, CA**303**

9:00 p.m.

espn

304

Saturday, December 2

305 IDAHO

12:00 p.m.

306 GEORGIA STATE**307 LOUISIANA**

12:00 p.m.

308 APPALACHIAN STATE**309 GEORGIA SOUTHERN**

12:00 p.m.

310 COASTAL CAROLINA**311 TROY**

3:30 p.m.

312 ARKANSAS STATE**313 SOUTH ALABAMA**

4:00 p.m.

314 NEW MEXICO STATE**CUSA CHAMPIONSHIP** SITE: TBA**315**

11:00 a.m.

316**AAC CHAMPIONSHIP** SITE: TBA**317**

12:00 p.m.

ESPN

318**MAC CHAMPIONSHIP** Ford Field, Detroit, MI**319**

2:00 p.m.

espn2

320**SEC CHAMPIONSHIP** Mercedes-Benz Stadium, Atlanta, GA**321**

4:00 p.m.

322**MW CHAMPIONSHIP** SITE: TBA**323**

4:30 p.m.

ESPN

324**ACC CHAMPIONSHIP** Bank of America Stadium, Charlotte, NC**325**

7:45 p.m.

ABC

326**BIG TEN CHAMPIONSHIP** Lucas Oil Stadium, Indianapolis, IN**327**

8:00 p.m.

FOX

328**MASSACHUSETTS**

TBA

FIU

FREE Plays DAILY as well as keeping you Updated on all of the upcoming plays!!!

1-347-677-1700

Week 13 NFL cont. Sunday, December 3rd

351 DETROIT 1:00 p.m.					
352 BALTIMORE					
353 SAN FRANCISCO 1:00 p.m.					
354 CHICAGO					
355 MINNESOTA 1:00 p.m.					
356 ATLANTA					
357 NEW ENGLAND 1:00 p.m.					
358 BUFFALO					
359 DENVER 1:00 p.m.					
360 MIAMI					
361 HOUSTON 1:00 p.m.					
362 TENNESSEE					
363 INDIANAPOLIS 1:00 p.m.					
364 JACKSONVILLE					
365 TAMPA BAY 1:00 p.m.					
366 GREEN BAY					
367 KANSAS CITY 1:00 p.m.					
368 NY JETS					
369 CAROLINA 1:00 p.m.					
370 NEW ORLEANS					
371 CLEVELAND 4:05 p.m.					
372 LA CHARGERS					
373 LA RAMS 4:25 p.m.					
374 ARIZONA					
375 NY GIANTS 4:25 p.m.					
376 OAKLAND					
377 PHILADELPHIA 8:30 p.m.					
378 SEATTLE					

Monday Night December 4, 2017

379 PITTSBURGH 8:30 p.m.					
380 CINCINNATI					

MONDAY NIGHT MAGIC PAY AFTER YOU WIN!

Northcoast Office \$30 GUARANTEED WINNER!

New to Northcoast? For decades we offered our Monday Night Selection on the **PAY-AFTER-YOU-WIN BASIS**. It's simple. If the game fails to cover - **YOU DON'T PAY!** When the Monday Night Winner does cover, we will charge your credit card \$30! We're excited to take your calls in the office at **1-800-654-3448** after noon on Monday for **MONDAY NIGHT PAY AFTER YOU WIN.**



Valid credit card required at time of purchase. Call 1-800-654-3448 after noon EST.

NFL Football wk 14 Thursday, December 7th ncsports.com

101 NEW ORLEANS 8:25 p.m.	NBC				
102 ATLANTA					

COLLEGE Football wk 15 Saturday, December 9th

103 ARMY 3:00 p.m. <small>Lincoln Financial Field, Philadelphia</small>	CBS				
104 NAVY					

Week 14 NFL cont. Sunday, December 10th

105 DETROIT 1:00 p.m.					
106 TAMPA BAY					
107 CHICAGO 1:00 p.m.					
108 CINCINNATI					
109 INDIANAPOLIS 1:00 p.m.					
110 BUFFALO					
111 SEATTLE 1:00 p.m.					
112 JACKSONVILLE					
113 OAKLAND 1:00 p.m.					
114 KANSAS CITY					
115 MINNESOTA 1:00 p.m.					
116 CAROLINA					
117 GREEN BAY 1:00 p.m.					
118 CLEVELAND					
119 SAN FRANCISCO 1:00 p.m.					
120 HOUSTON					
121 WASHINGTON 4:05 p.m.					
122 LA CHARGERS					
123 NY JETS 4:05 p.m.					
124 DENVER					
125 TENNESSEE 4:05 p.m.					
126 ARIZONA					
127 PHILADELPHIA 4:25 p.m.					
128 LA RAMS					
129 DALLAS 4:25 p.m.					
130 NY GIANTS					
131 BALTIMORE 8:30 p.m.	NBC				
132 PITTSBURGH					

Monday Night December 11, 2017

133 NEW ENGLAND 8:30 p.m.	ESPN				
134 MIAMI					

NFL Football wk 15

Thursday, December 14 All Times ET and subject to change

301 DENVER 8:25 p.m.	NBC					
302 INDIANAPOLIS						

Saturday, December 16th

303 CHICAGO 4:30 p.m.	NFL					
304 DETROIT						
305 LA CHARGERS 8:25 p.m.	NFL					
306 KANSAS CITY						

CELEBRATION BOWL Mercedes-Benz Stadium - Atlanta, GA

199 12:00 p.m.	ABC					
200						

NEW ORLEANS BOWL Mercedes-Benz Superdome - New Orleans, LA

201 1:00 p.m.	ESPN					
202						

CURE BOWL Camping World Stadium - Orlando, FL

203 2:30 p.m.	CBSC					
204						

LAS VEGAS BOWL Sam Boyd Stadium - Las Vegas, NV

205 3:30 p.m.	ABC					
206						

NEW MEXICO BOWL Dreamstyle Stadium - Albuquerque, NM

207 4:30 p.m.	ESPN					
208						

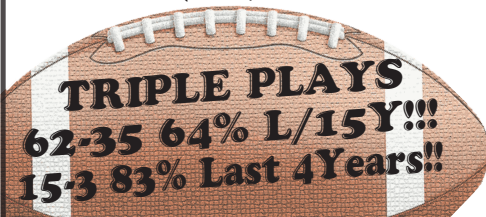
CAMELLIA BOWL Crampton Bowl - Montgomery, AL

209 8:00 p.m.	ESPN					
210						

BOWL TOTALS ON EVERY BOWL GAME!!!!
All Totals Listed As Single, Double or Triple

TRIPLE PLAYS 15-3 83% L4Y!!!!

Call on Game Day! \$15 each thru at 1-800-654-3448 or use MARQUEE 7-PACKS TO ACCESS BOWL TOTALS (Marquee 7/14/21-Packs Expire Super Bowl 2018)



Check out the
DOUBLE BOWL
Issue of
POWER SWEEP
for packages that include All Totals!

Week 15 NFL cont. Sunday, December 17th

307 PHILADELPHIA 1:00 p.m.					
308 NY GIANTS					
309 GREEN BAY 1:00 p.m.					
310 CAROLINA					
311 CINCINNATI 1:00 p.m.					
312 MINNESOTA					
313 MIAMI 1:00 p.m.					
314 BUFFALO					
315 HOUSTON 1:00 p.m.					
316 JACKSONVILLE					
317 NY JETS 1:00 p.m.					
318 NEW ORLEANS					
319 ARIZONA 1:00 p.m.					
320 WASHINGTON					
321 BALTIMORE 1:00 p.m.					
322 CLEVELAND					
323 LA RAMS 4:05 p.m.					
324 SEATTLE					
325 NEW ENGLAND 4:25 p.m.					
326 PITTSBURGH					
327 TENNESSEE 4:25 p.m.					
328 SAN FRANCISCO					
329 DALLAS 8:30 p.m.	NBC				
330 OAKLAND					

Monday Night December 18, 2017

331 ATLANTA 8:30 p.m.	ESPN				
332 TAMPA BAY					

BOCA RATON BOWL FIU Stadium - Boca Raton, FL Tuesday, December 19th

211 7:00 p.m.	ESPN				
212					

1-347-677-1700

TEN FREE PLAYS RELEASED EACH WEEK!!!

HITTING 67% WINNERS THIS SEASON!

Button #3 - NC Sportsline Plays of the Week: Underdog • NFL Totals • College POD • Pro POD

Button #9 - Early Bird • Power Plays 4★ • Economy Club #2 Pick • Big Dog • Big 12 • College Totals Play

PLAYS SUBJECT TO CHANGE DURING POST SEASON BUT FREE WINNERS THRU SUPER BOWL!

FRISCO BOWL Toyota Stadium - Frisco, TX **Wednesday, December 20, 2017**

213	8:00 p.m.	ESPN				
214						

GASPARILLA BOWL Tropicana Field - St Petersburg, FL **Thursday, December 21, 2017**

215	8:00 p.m.	ESPN				
216						

BAHAMAS BOWL Thomas A Robinson National Stadium - Nassau, Bahamas **Friday, December 22, 2017**

217	12:30 p.m.	ESPN				
218						

FAMOUS IDAHO POTATO BOWL Albertson's Stadium - Boise, ID

219	4:00 p.m.	ESPN				
220						

NFL Football Wk 16 **Saturday, December 23, 2017**

101 INDIANAPOLIS	4:30 p.m.	NFL				
102 BALTIMORE						
103 MINNESOTA	8:30 p.m.	NBC				
104 GREEN BAY						

BIRMINGHAM BOWL Legion Field - Birmingham, AL

221	12:00 p.m.	ESPN				
222						

ARMED FORCES BOWL Amon G Carter Stadium - Fort Worth, TX

223	3:30 p.m.	ESPN				
224						

DOLLAR GENERAL BOWL Ladd-Peebles Stadium - Mobile, AL

225	7:00 p.m.	ESPN				
226						

(BOWLS & PLAYOFFS)

2016 NFL 2007 • 2008 • 2009 • 2010 • 2011 • 2012 • 2013 • 2014 • 2015 • 2016

5-0 100% **114-78!!!!** **College Totals Triple Rated: 3-1 LY!!!**

Post Season Executive Club
Every Bowl Game, Every Playoff Game. Every Play. Every Game. Every Winner.

Save 60%! Pay \$849

TOTAL IF PURCHASED SEPARATELY \$2238

You're covered for the entire Post Season! Starts December 16th (Regular season NFL is *not* included)

Price per Gm	Total
Every Bowl Side INCLUDING THE GOY	41 x \$30 \$1230
Every Bowl Totals Play	41 x \$9 \$369
Every NFL Playoff Side Play	10 x \$30 \$300
Every NFL Playoff Totals Play	10 x \$9 \$90
Super Bowl Side and Total	\$39 \$39
Marquee Props - Playoffs & Super Bowl	20 x \$9 \$180
Super Bowl System	\$30 \$30

Call Today
1.800.654.3448
Check POWER SWEEP for other packages and Saving\$ on the post season!

NFL Football Week 16 cont. Sunday, December 24th

105 DETROIT 1:00 p.m.					
106 CINCINNATI					
107 LA CHARGERS 1:00 p.m.					
108 NY JETS					
109 LA RAMS 1:00 p.m.					
110 TENNESSEE					
111 CLEVELAND 1:00 p.m.					
112 CHICAGO					
113 TAMPA BAY 1:00 p.m.					
114 CAROLINA					
115 ATLANTA 1:00 p.m.					
116 NEW ORLEANS					
117 DENVER 1:00 p.m.					
118 WASHINGTON					
119 MIAMI 1:00 p.m.					
120 KANSAS CITY					
121 BUFFALO 1:00 p.m.					
122 NEW ENGLAND					
123 JACKSONVILLE 4:05 p.m.					
124 SAN FRANCISCO					
125 NY GIANTS 4:25 p.m.					
126 ARIZONA					
127 SEATTLE 4:25 p.m.	NBC				
128 DALLAS					

HAWAII BOWL Aloha Stadium - Honolulu, HI

227 8:30 p.m.	ESPN				
228					

MONDAY NIGHT MAGIC PAY AFTER YOU WIN!

Northcoast Office \$30 GUARANTEED WINNER!

New to Northcoast? For decades we offered our Monday Night Selection on the **PAY-AFTER-YOU-WIN BASIS**. It's simple. If the game fails to cover - **YOU DON'T PAY!** When the Monday Night Winner does cover, we will charge your credit card \$30! We're excited to take your calls in the office at **1-800-654-3448** after noon on Monday for **MONDAY NIGHT PAY AFTER YOU WIN.**



Valid credit card required at time of purchase. Call 1-800-654-3448 after noon EST.

**10-2 RUN AS OF PRESSTIME ON THE MONDAY NIGHT
SIDE AND TOTAL!** Available on Monday after noon EST.
DON'T MISS OUT ON THIS MONDAY'S MAGIC!!!!!!

NFL Football Wk 16 cont. Monday, December 25, 2017

129 PITTSBURGH 4:30 p.m.	NBC				
130 HOUSTON					
131 OAKLAND 8:30 p.m.	ESPN				
132 PHILADELPHIA					

COLLEGE Football Tuesday, December 26, 2017

HEART OF DALLAS BOWL Cotton Bowl - Dallas, TX

229 1:30 p.m.	ESPN				
230					

QUICKEN LANE BOWL Ford Field - Detroit MI

231 5:15 p.m.	ESPN				
232					

CACTUS BOWL Chase Field - Phoenix, AZ

233 9:00 p.m.	ESPN				
234					

INDEPENDENCE BOWL Wednesday, December 27th Independence Stadium - Shreveport, LA

235 1:30 p.m.	ESPN				
236					

PINSTRIPE BOWL Yankee Stadium - New York, NY

237 5:15 p.m.	ESPN				
238					

TEXAS BOWL NRG Stadium - Houston, TX

239 9:00 p.m.	ESPN				
240					

FOSTER FARMS BOWL Levi's Stadium - Santa Clara, CA

8:30 p.m.	FOX				

THE TIME TO RENEW IS NOW!



POWER SWEEP

2018 **\$84**
2019 added to '18 sub **\$69**
2020 added to '18/'19 sub **\$69**

When you renew for 2018 POWER SWEEP you can add an email sub to POWER PLAYS for only \$50 more for the year.



POWER PLAYS

2018 **\$84**
2019 added to '18 sub **\$69**
2020 added to '18/'19 sub **\$69**

Call 1-800-654-3448 and renew today! Prices will increase again after the season.

Above prices are for email subscriptions. If you need mail delivery add \$40 per year. If you need LOGS included with your MAIL version, please add an additional \$10.

Call 1-800-654-3448

COLLEGE Football		Thursday, December 28th			
MILITARY BOWL Navy-Marine Corps Memorial Stadium - Annapolis, MA					
241	1:30 p.m.	ESPN			
242					
CAMPING WORLD BOWL Camping World Stadium - Orlando, FL					
243	5:15 p.m.	ESPN			
244					
ALAMO BOWL Alamodome - San Antonio, TX					
245	9:00 p.m.	ESPN			
246					
HOLIDAY BOWL SDCCU Stadium - San Diego, CA					
	6:00 p.m.				
BELK BOWL Bank of America Stadium - Charlotte, NC		Friday, December 29th			
247	1:00 p.m.	ESPN			
248					
SUN BOWL Sun Bowl - El Paso, TX					
249	2:00 p.m.	CBS			
250					
MUSIC CITY BOWL Nissan Stadium - Nashville, TN					
251	4:30 p.m.	ESPN			
252					
ARIZONA BOWL Arizona Stadium - Tuscon, AZ					
253	5:30 p.m.	CBSC			
254					
COTTON BOWL AT&T Stadium - Arlington, TX					
255	8:30 p.m.	ESPN			
256					
TAXSLAYER BOWL Everbank Field - Jacksonville, FL		Saturday, December 30th			
257	12:00 p.m.	ESPN			
258					
LIBERTY BOWL Liberty Bowl Memorial Stadium - Memphis, TN					
259	12:30 p.m.	ABC			
260					
FIESTA BOWL University of Phoenix Stadium - Glendale, AZ					
261	4:00 p.m.	ESPN			
262					
ORANGE BOWL Hard Rock Stadium - Miami Gardens, FL					
263	8:00 p.m.	ESPN			
264					

Week 17 NFL Sunday, December 31, 2017

301 CINCINNATI 1:00 p.m.					
302 BALTIMORE					
303 GREEN BAY 1:00 p.m.					
304 DETROIT					
305 BUFFALO 1:00 p.m.					
306 MIAMI					
307 CAROLINA 1:00 p.m.					
308 ATLANTA					
309 NEW ORLEANS 1:00 p.m.					
310 TAMPA BAY					
311 JACKSONVILLE 1:00 p.m.					
312 TENNESSEE					
313 NY JETS 1:00 p.m.					
314 NEW ENGLAND					
315 HOUSTON 1:00 p.m.					
316 INDIANAPOLIS					
317 CLEVELAND 1:00 p.m.					
318 PITTSBURGH					
319 WASHINGTON 1:00 p.m.					
320 NY GIANTS					
321 CHICAGO 1:00 p.m.					
322 MINNESOTA					
323 DALLAS 1:00 p.m.					
324 PHILADELPHIA					
325 OAKLAND 4:25 p.m.					
326 LA CHARGERS					
327 ARIZONA 4:25 p.m.					
328 SEATTLE					
329 KANSAS CITY 4:25 p.m.					
330 DENVER					
331 SAN FRANCISCO 4:25 p.m.					
332 LA RAMS					

MONDAY NIGHT MAGIC PAY AFTER YOU WIN!

Northcoast Office \$30 GUARANTEED WINNER!

Monday Night Selection on the PAY-AFTER-YOU-WIN BASIS. It's simple. If the game fails to cover - YOU DON'T PAY! When the Monday Night Winner does cover, we will charge your credit card \$30! We're excited to take your calls in the office at 1-800-654-3448 after noon on Monday for MONDAY NIGHT PAY AFTER YOU WIN.

Valid credit card required at time of purchase. Call 1-800-654-3448 after noon EST.



OUTBACK BOWL Raymond James Stadium - Tampa, FL

265	12:00 p.m.	espn2				
266						

PEACH BOWL Mercedes-Benz Stadium - Atlanta, GA

267	12:30 p.m.	ESPN				
268						

CITRUS BOWL Camping World Stadium - Orlando, FL

269	1:00 p.m.	ABC				
270						

ROSE BOWL Rose Bowl - Pasadena, CA

271	5:00 p.m.	ESPN				
272						

SUGAR BOWL Mercedes-Benz Superdome - New Orleans, LA

273	8:45 p.m.	ESPN				
274						

HAPPY NEW YEAR

FROM THE STAFF OF *NORTHCOAST SPORTS*

THE PLAYOFFS

NATIONAL CHAMPIONSHIP



- '16 #3 Clemson (+6') 35 #1 Alabama 31
 - '15 #2 Alabama (-6') 45 #1 Clemson 40
 - '14 #5 Ohio St (+6) 42 #3 Oregon 20
 - '13 #1 Florida St 34 #2 Auburn (+10) 31*
 - '12 #2 Alabama (-10) 42 #1 Notre Dame 14*
- *BCS National Championship

FIESTA BOWL



- '16 #3 Clemson (+2') 31 #2 Ohio St 0
- '15 #7 Ohio St (-6') 44 #8 Notre Dame 28
- '14 #21 Boise St (+3) 38 #12 Arizona 30
- '13 #15 UCF (+16) 52 #6 Baylor 42
- '12 #5 Oregon (-7) 35 #7 Kansas St 17

PEACH BOWL



- '16 #1 Alabama (-14) 24 #4 Washington 7
- '15 #14 Houston (+7) 38 #9 Florida St 24
- '14 #6 TCU (-3') 42 #9 Mississippi 3
- '13 #20 Texas A&M 52 #22 Duke (+12') 48
- '12 #14 Clemson (+6) 25 #9 LSU 24

FUTURE PLAYOFF SEMI-FINALS

ORANGE BOWL



- '16 #10 Florida St (+7) 33 #6 Michigan 32
- '15 #1 Clemson (+3') 37 #4 Oklahoma 17
- '14 #10 Georgia Tech (+6) 49 #8 Miss St 34
- '13 #12 Clemson (+2') 40 #7 Ohio St 35
- '12 #13 Florida St (-13') 31 #16 Northern Illinois 10

COTTON BOWL



- '16 #8 Wisconsin (-7) 24 #12 W Michigan 16
- '15 #2 Alabama (-10) 38 #3 Michigan St 0
- '14 #7 Michigan St (+2') 42 #4 Baylor 41
- '13 #9 Missouri (+1') 41 #13 Oklahoma St 31
- '12 #10 Texas A&M (-3) 41 #12 Oklahoma 13

ROSE BOWL



- '16 #9 USC (-7) 52 #5 Penn St 49
- '15 #6 Stanford (-6) 45 #5 Iowa 16
- '14 #3 Oregon (-7') 59 #2 Florida St 20
- '13 #4 Michigan St (+6') 24 #5 Stanford 20
- '12 #8 Stanford (-6) 20 Wisconsin 14

SUGAR BOWL



- '16 #7 Oklahoma (-3) 35 #17 Auburn 19
- '15 #16 Mississippi (-8) 48 #13 Oklahoma St 20
- '14 #5 Ohio St (+8) 42 #1 Alabama 35
- '13 #11 Oklahoma (+15) 45 #3 Alabama 31
- '12 #22 Louisville (-14) 33 #4 Florida 23

Call the office on Game Day for \$15 each
1-800-654-3448

BOWL TOTALS ON EVERY BOWL GAME!!!!
All Totals Listed As Single, Double or Triple

TRIPLE PLAYS 15-3 83% L4Y!!!!

Saturday, January 6th, 2018

NFL WILDCARD PLAYOFFS

101					
TBA					
102					
103					
TBA					
104					

NFL WILDCARD PLAYOFFS

Sunday, January 7th, 2018

105					
TBA					
106					
107					
TBA					
108					

PRO PLAYOFF HISTORY

HOME TEAM IN CAPS In () is the line followed by the total [] indicates each teams playoff seeding

2016

Wild Card Games

- [4] HOUSTON (-3/37) 27 Oakland 14 [5]
- [3] PITTSBURGH (-11/45) 30 Miami 12 [6]
- [3] SEATTLE (-8/43) 26 Detroit 6 [6]
- [4] GREEN BAY (-5/44) 38 NY Giants 13 [5]

Conference Semi-Finals

- [1] NEW ENGLAND (-16/44) 34 Houston 16 [4]
- [3] Pittsburgh (+1/44) 18 KANSAS CITY 16 [2]
- [2] ATLANTA (-5/52) 44 Seattle 21 [3]
- [4] Green Bay (+4/51) 34 DALLAS 31 [1]

Conference Champ

- [2] ATLANTA (-4/60) 44 Green Bay 21 [4]
- [1] NEW ENGLAND (-6/50) 36 Pittsburgh 17 [3]

Super Bowl 41

- [1] New England (-3/59) 34 Atlanta 28 [2]

2013

Wild Card Games

- [4] INDIANAPOLIS 45 (+1/46) Kansas City 44 [5]
- [6] San Diego 27 (+6/46) CINCINNATI 10 [3]
- [5] San Francisco 23 (-3/46) GREEN BAY 20 [4]
- [6] New Orleans 26 (+3/53) PHILADELPHIA 24 [3]

Conference Semi-Finals

- [2] NEW ENGLAND 43 (-7/52) Indianapolis 22 [4]
- [1] SEATTLE 23 (-8/44) New Orleans 15 [6]
- [5] San Francisco 23 (-1/41) CAROLINA 10 [2]
- [1] DENVER 24 (-8/54) San Diego 10 [6]

Conference Champ

- [1] SEATTLE 23 (-3/40) San Francisco 17 [5]
- [1] DENVER 26 (-6/54) New England 16 [2]

Super Bowl 48

- [1] Seattle 43 (+2/48) Denver 8 [1]

2010

Wild Card Games

- [4] SEATTLE (+10/45) 41 New Orleans 36 [5]
- [6] NY Jets (+2/45) 17 INDIANAPOLIS 16 [3]
- [5] Baltimore (-3/40) 30 KANSAS CITY 7 [4]
- [6] Green Bay (+2/46) 21 PHILADELPHIA 16 [3]

Conference Semi-Finals

- [2] PITTSBURGH (-3/37) 31 Baltimore 24 [5]
- [6] Green Bay (+1/43) 48 ATLANTA 21 [1]
- [2] CHICAGO (-10/43) 35 Seattle 24 [4]
- [6] NY Jets (+9/44) 28 NEW ENGLAND 21 [1]

Conference Champ

- [6] Green Bay (-3/42) 21 CHICAGO 14 [2]
- [2] PITTSBURGH (-4/38) 24 NY Jets 19 [6]

Super Bowl 45

- [6] Green Bay (-3/44) 31 Pittsburgh 25 [2]

Wild Card Games

- [5] Kansas City 30 (-3/41) HOUSTON 0 [4]
- [6] Seattle 10 (-5/42) MINNESOTA 9 [3]
- [6] Pittsburgh (-2/46) 18 CINCINNATI 16 [3]
- [5] Green Bay (-1/46) 35 WASHINGTON 18 [4]

Conference Semi-Finals

- [2] NEW ENGLAND (-5/43) 27 Kansas City 20 [5]
- [2] ARIZONA (-7/50) 26 Green Bay 20 [5]
- [1] DENVER (-7/45) 23 Pittsburgh 16 [6]
- [1] CAROLINA (-3/44) 31 Seattle 24 [6]

Conference Champ

- [1] Denver (+3/44) 20 NEW ENGLAND 18 [2]
- [1] CAROLINA (-3/47) 49 Arizona 15 [2]

Super Bowl 41

- [1] Carolina (-4/45) 10 Denver 24 [1]

2012

Wild Card Games

- [3] GREEN BAY 24 (-7/46) Minnesota 10 [6]
- [3] HOUSTON (-4/43) 19 Cincinnati 13 [6]
- [4] BALTIMORE (-7/46) 24 Indianapolis 9 [5]
- [5] Seattle (-3/45) 24 WASHINGTON 10 [4]

Conference Semi-Finals

- [1] ATLANTA (-3/46) 30 Seattle 28 [5]
- [2] NEW ENGLAND (-9/48) 41 Houston 28 [3]
- [2] SAN FRANCISCO (-3/45) 45 Green Bay 31 [3]
- [4] Baltimore (+8/45) 38 DENVER 35 [1] - OT

Conference Champ

- [2] San Francisco (-3/48) 28 ATLANTA 24 [1]
- [4] Baltimore (+7/51) 28 NEW ENGLAND 13 [2]

Super Bowl 47

- [4] Baltimore (+4/48) 34 San Francisco 31 [2]

2009

Wild Card Games

- [3] DALLAS (-3/33) 34 Philadelphia 14 [6]
- [5] NY Jets (+2/45) 24 CINCINNATI 14 [4]
- [6] Baltimore (+3/43) 33 NEW ENGLAND 14 [3]
- [4] ARIZONA (+2/47) 51 Green Bay 45 [5] - OT

Conference Semi-Finals

- [1] INDIANAPOLIS (-6/44) 20 Baltimore 30 [6]
- [1] NEW ORLEANS (-7/57) 45 Arizona 14 [4]
- [5] NY Jets (+7/42) 17 SAN DIEGO 14 [2]
- [2] MINNESOTA (-2/45) 34 Dallas 3 [3]

Conference Champ

- [1] INDIANAPOLIS (-8/40) 30 NY Jets 17 [5]
- [1] NEW ORLEANS (-3/53) 31 Minnesota 28 [2] - OT

Super Bowl 44

- [1] New Orleans (+5/56) 31 Indianapolis 17 [1]

Wild Card Games

- [4] CAROLINA 27 (-4/38) Arizona 16 [5]
- [6] Baltimore 30 (+3/46) PITTSBURGH 17 [2]
- [4] INDIANAPOLIS 26 (-4/49) Cincinnati 10 [5]
- [3] DALLAS 24 (-7/48) Detroit 20 [6]

Conference Semi-Finals

- [1] NEW ENGLAND 35 (-7/48) Baltimore 31 [6]
- [1] SEATTLE 31 (-11/40) Carolina 17 [4]
- [2] GREEN BAY 26 (-6/53) Dallas 21 [3]
- [4] Indianapolis 24 (+7/53) DENVER 13 [2]

Conference Champ

- [1] SEATTLE 28 (-7/47) Green Bay 22 [2]
- [1] NEW ENGLAND 45 (-7/53) Indianapolis 7 [4]

Super Bowl 49

- [1] New England 28 (-1/48) Seattle 24 [1]

2011

Wild Card Games

- [3] HOUSTON (-4/38) 31 Cincinnati 10 [6]
- [3] NEW ORLEANS (-10/59) 45 Detroit 28 [6]
- [4] DENVER (+8/34) 29 Pittsburgh 23 [5] - OT
- [4] NY GIANTS (-3/47) 24 Atlanta 2 [5]

Conference Semi-Finals

- [1] NEW ENGLAND (-13/50) 45 Denver 10 [4]
- [2] SAN FRAN (+3/46) 36 New Orleans 32 [3]
- [4] NY Giants (+8/54) 37 GREEN BAY 20 [1]
- [2] BALTIMORE (-7/36) 20 Houston 13 [3]

Conference Champ

- [4] NY Giants (+2/41) 20 SAN FRANCISCO 17 [2] - OT
- [1] NEW ENGLAND (-7/50) 23 Baltimore 20 [2]

Super Bowl 46

- [4] NY Giants (+3/53) 21 New England 17 [1]

2008

Wild Card Games

- [4] ARIZONA (Even/50) 30 Atlanta 24 [5]
- [4] SAN DIEGO (-1/49) 23 Indianapolis 17 [5]
- [6] Baltimore (-3/38) 27 MIAMI 9 [3]
- [6] Philadelphia (-3/41) 26 MINNESOTA 14 [3]

Conference Semi-Finals

- [6] Baltimore (+3/34) 31 TENNESSEE 10 [1]
- [4] Arizona (+9/48) 33 CAROLINA 13 [2]
- [6] Philadelphia (+4/38) 23 NY GIANTS 11 [1]
- [2] PITTSBURGH (-6/37) 35 San Diego 24 [5]

Conference Champ

- [4] ARIZONA (+3/47) 32 Philadelphia 25 [6]
- [2] PITTSBURGH (-6/34) 23 Baltimore 14 [6]

Super Bowl 43

- [2] Pittsburgh (-6/46) 27 Arizona 23 [4]

Monday, January 8th
COLLEGE NATIONAL CHAMPIONSHIP GAME

Mercedes-Benz Stadium - Atlanta, GA

151	8:45 p.m.	ESPN					
152							

FREE Plays DAILY as well as keeping you Updated on all of the upcoming plays!!!

1-347-677-1700

NFL DIVISIONAL PLAYOFFS

Saturday, January 13th

301	TBA						
302							
303	TBA						
304							

Sunday, January 14th

305	TBA						
306							
307	TBA						
308							

CONF SEMI-FINALS RESULTS L4Y

2015

Conference Semi-Finals

- [2] NEW ENGLAND (-5/43) 27 Kansas City 20 [5]
- [2] ARIZONA (-7/50) 26 Green Bay 20 [5]
- [1] DENVER (-7/45) 23 Pittsburgh 16 [6]
- [1] CAROLINA (-3/44) 31 Seattle 24 [6]

2014

Conference Semi-Finals

- [1] NEW ENGLAND 35 (-7/52) Baltimore 31 [6]
- [1] SEATTLE 31 (-11/40) Carolina 17 [4]
- [2] GREEN BAY 26 (-6/53) Dallas 21 [3]
- [4] Indianapolis 24 (+7/53) DENVER 13 [2]

2013

Conference Semi-Finals

- [2] NEW ENGLAND 43 (-7/52) Indianapolis 22 [4]
- [1] SEATTLE 23 (-8/44) New Orleans 15 [6]
- [5] San Francisco 23 (-1/41) CAROLINA 10 [2]
- [1] DENVER 24 (-8/54) San Diego 17 [6]

2012

Conference Semi-Finals

- [1] ATLANTA (-3/46) 30 Seattle 28 [5]
- [2] NEW ENGLAND (-9/48) 41 Houston 28 [3]
- [2] SAN FRANCISCO (-3/45) 45 Green Bay 31 [3]
- [4] Baltimore (+8/45) 38 DENVER 35 [1] - OT

NFL PLAYOFF BOX SCORES

2015 CHAMPIONSHIP ROUND							2011 CHAMPIONSHIP ROUND								
SEED	LINE	SC	FD	RA-RY	CO-ATPY	I-F	SEED	LINE	SC	FD	RA-RY	CO-ATPY	I-F		
2	ARZ	47	15	21	16-60	23-41-227	4-3	2	BAL	50	20	19	31-116	22-36-282	1-0
1	CAR	-3	49	21	37-152	19-28-324	1-0	1	NE	-7	23	25	31-96	22-36-234	2-1
2	NE	-3	18	20	17-44	27-56-292	2-0	4	NYG	41	20	20	26-85	32-58-267	0-0
1	DEN	45	20	12	30-99	17-32-145	0-1	2	SF (OT)-2	17	15	15	28-150	12-26-178	0-2
2014 CHAMPIONSHIP ROUND							2010 CHAMPIONSHIP ROUND								
SEED	LINE	SC	FD	RA-RY	CO-ATPY	I-F	SEED	LINE	SC	FD	RA-RY	CO-ATPY	I-F		
4	IND	52	7	17	19-83	12-33-126	2-1	6	GB	-3	21	23	32-120	17-30-236	2-0
1	NE	-7	45	28	40-177	23-35-220	1-0	2	CHI	42	14	17	24-83	19-38-218	3-0
2	GB	44	22	19	30-135	19-34-171	2-0	6	NYJ	38	19	17	22-70	20-33-219	0-1
1	SEA	-8	28	20	35-194	15-30-203	4-1	2	PIT	-4	24	23	43-166	10-19-133	2-0
2013 CHAMPIONSHIP ROUND							2009 CHAMPIONSHIP ROUND								
SEED	LINE	SC	FD	RA-RY	CO-ATPY	I-F	SEED	LINE	SC	FD	RA-RY	CO-ATPY	I-F		
2	NE	54	16	19	16-64	24-38-256	0-0	5	NYJ	40	17	17	29-86	18-31-302	1-0
1	DEN	-6	26	27	28-107	32-43-400	0-0	1	IND	-8	30	27	24-101	26-39-360	0-1
5	SF	40	17	16	28-161	14-24-147	2-1	2	MIN	53	28	31	36-165	28-46-310	2-3
1	SEA	-3	23	14	29-115	16-25-193	0-1	1	NO (OT)-3	31	15	15	23-68	7-31-189	0-1
2012 CHAMPIONSHIP ROUND															
SEED	LINE	SC	FD	RA-RY	CO-ATPY	I-F									
4	BAL	51	28	25	33-121	21-36-235	0-0								
2	NE	-7	13	28	28-108	29-54-320	2-1								
2	SF	-3	28	21	29-149	16-21-224	0-1								
1	ATL	48	24	27	23-81	30-42-396	1-1								

EAST-WEST SHRINE GAME Tropicana Field - St Petersburg, FL **January 20**

491	3:00 p.m.	NFL					
492							

NFLPA COLLEGIATE BOWL Stubhub Center - Carson, CA

493	6:00 p.m.	ESPN					
494							

NFL CONFERENCE CHAMPIONSHIPS

Sunday, January 21st

311 TBA					
312					
313 TBA					
314					

SENIOR BOWL Ladd-Peebles Stadium - Mobile, AL

Saturday, January 27

495 2:30 p.m.	NFL				
496					

PRO BOWL Camping World Stadium - Orlando, FL

Sunday, January 28

497 8:00 p.m.	ESPN				
498					

SUPER BOWL 52

Sunday, February 4th • US Bank Stadium - Minneapolis, MN

101 6:30 p.m.	CBS				
102					

2017 MARQUEE PACKS EXPIRE TODAY Get Super Bowl Props on The Marquee Packs

If you have any calls remaining on your Marquee Packs that were purchased in 2017, those credits will expire on Super Bowl Sunday. Make sure that you call for Super Bowl Plays today and use up the credits that you have on the Marquee System.

We look forward to next season and a new season of Marquees in 2018.

2017 MARQUEES DELIVERING 67% WINNERS ON THE YEAR!

IF YOU ARE A DOWNLOAD CUSTOMER YOU ARE ABLE TO DOWNLOAD THE SCHEDULES FOR FREE.

If you want to receive them via mail in 2018 YOU NEED TO TELL US EVEN IF YOU REQUESTED MAILED SCHEDULES FOR 2017

THE REQUEST IS NOT CARRIED OVER

We are more than happy to mail subscribers schedules throughout the football season, but in an effort to keep unwanted mail off of your kitchen table, we will only mail you schedules if: **YOU TELL US YOU WANT THEM MAILED.** Simply call us and ask us to mark you for mail delivery of the schedule in **2018 at 1-800-654-3448.**